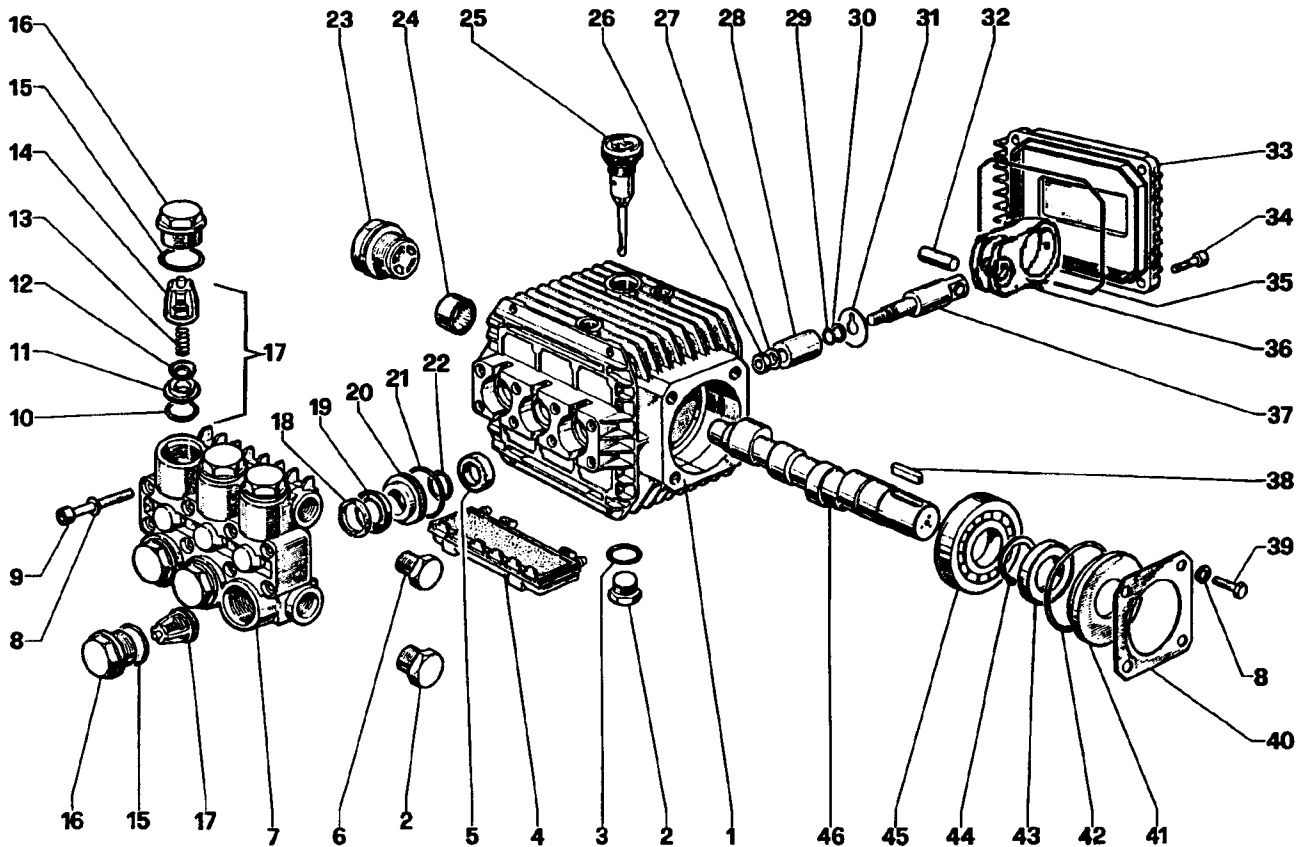


# TP Series 51 – Solid Shaft

# GENERAL PUMP

A member of the Interpump Group



## PARTS LIST

ITEM	PART NO.	DESCRIPTION	KIT NO.	QTY.	ITEM	PART NO.	DESCRIPTION	KIT NO.	QTY.	ITEM	PART NO.	DESCRIPTION	KIT NO.	QTY.
1.	51.0106.22	Crankcase		1	18.	51.1000.51	Head Ring	96,97	3	30.	90.5022.00	Back Up Ring		3
2.	98.2100.00	Plug		2		51.1001.51	18mm	140,141		31.	96.7070.00	Flinger Washer		3
3.	90.3833.00	O-Ring		1	19.	90.2620.00	Packing	96,97	3	32.	97.7310.00	Connecting Rod Pin		3
4.	51.2091.02	Protector		1		90.2681.00	18mm	140,141		33.	51.1600.22	Crankcase Cover		1
5.	90.1565.00	Oil Seal	83	3	20.	51.0800.70	Packing Retainer	86,96	3	34.	99.1867.00	Screw		4
6.	98.2041.00	Plug		1		51.0803.70	18mm	139,140		35.	90.3917.00	Cover O-Ring		1
7.	51.1200.41	Manifold, Brass		1	21.	90.3604.00	O-Ring	86,96,97	3	36.	51.0301.22	Connecting Rod		3
8.	96.6938.00	Washer		8			18mm	139,140,141		37.	51.0500.56	Plunger Rod		3
9.	99.1943.00	Screw		8	22.	90.3835.00	O-Ring	86,96,97	3	38.	91.4878.00	Key		1
10.	90.3841.00	O-Ring	123	6		90.3843.00	18mm	139,140,141		39.	99.1807.00	Screw		4
11.	36.2003.66	Valve Seat	123	6	23.	97.5968.00	Sight Gauge		1	40.	50.1500.74	Retainer		1
12.	36.2001.76	Valve Plate	123	6	24.	91.8015.00	Needle Bearing		1	41.	50.2115.51	Spacer		1
13.	94.7376.00	Spring	123	6	25.	98.2103.00	Oil Dip Stick		1	42.	90.4097.00	O-Ring		1
14.	36.2025.51	Valve Cage	123	6	26.	92.2216.00	Nut		3	43.	90.1634.00	Oil Seal		1
15.	90.3847.00	O-Ring		6	27.	96.7008.00	Washer		3	44.	90.0635.00	Snap Ring		1
16.	98.2216.00	Valve Cap		6	28.	51.0400.09	Plunger – 15mm		3	45.	91.8329.00	Bearing		1
17.	36.7115.01	Valve Assy.	123	6		51.0401.66	Plunger – 18mm		3	46.	51.0204.65	Crankshaft		1
					29.	90.3572.00	O-Ring		3		51.0217.65	Crankshaft (TP2024)		

## REPAIR KITS

KIT NO.	83	86 (15mm)	96 (15mm)	97 (15mm)	123	139 (18mm)	140 (18mm)	141 (18mm)
ITEM NO.s INCLUDED IN KIT	5	20, 21, 22	18, 19, 20, 21, 22	18, 19, 21, 22	6, 7, 8, 10, 11, 12 (17)	20, 21, 22	18, 19, 20, 21, 22	18, 19, 21, 22
NUMBER OF ASSEMBLIES IN KIT	3	3	1	3	6	3	1	3
NUMBER OF CYLINDERS KIT WILL SERVICE	3	3	1	3	3	3	1	3

## TORQUE SPECS\*

Position	Ft.-lbs.
2	29.4
6	14.7
9	8.8
16	33.1
23	13.2
26	11.0
34	7.3
39	7.3

\*Decrease torque by 20% if threads are lubricated.